



**OYEN** Regional Rail Company



## NEW INDUSTRIAL DEVELOPMENT

CN is a world-class transportation leader and trade-enabler, essential to the economy and to the communities it serves.

CN safely transports more than 300 million tons of natural resources, manufactured products and finished goods throughout North America every year.

As the only railroad connecting Canada's Eastern and Western coasts with the U.S. South through a 19,500-mile rail network, CN and its affiliates have been contributing to community prosperity and programs supporting social responsibility and environmental stewardship.



**Edmonton**  
page 42

**Wetaskiwin**

**Camrose**

**Red Deer**

**Calgary**  
page 42

Alberta

Saskatchewan



Oven

BS

**TRACK CAPACITY:**

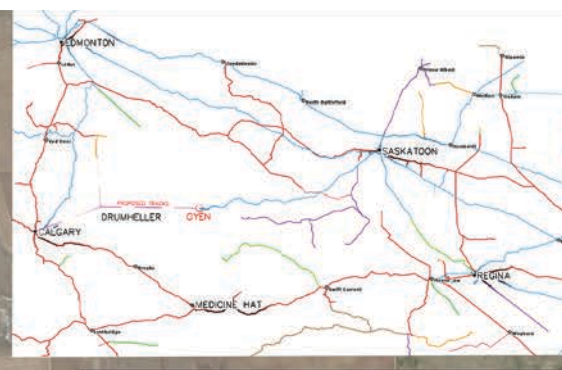
**EXISTING:**

TRACK 1:	3,854 FT
TRACK 2:	2,516 FT
TRACK 3:	2,654 FT
TRACK 4:	2,752 FT
TRACK S1:	3,500 FT

COMPLETED FALL 2023

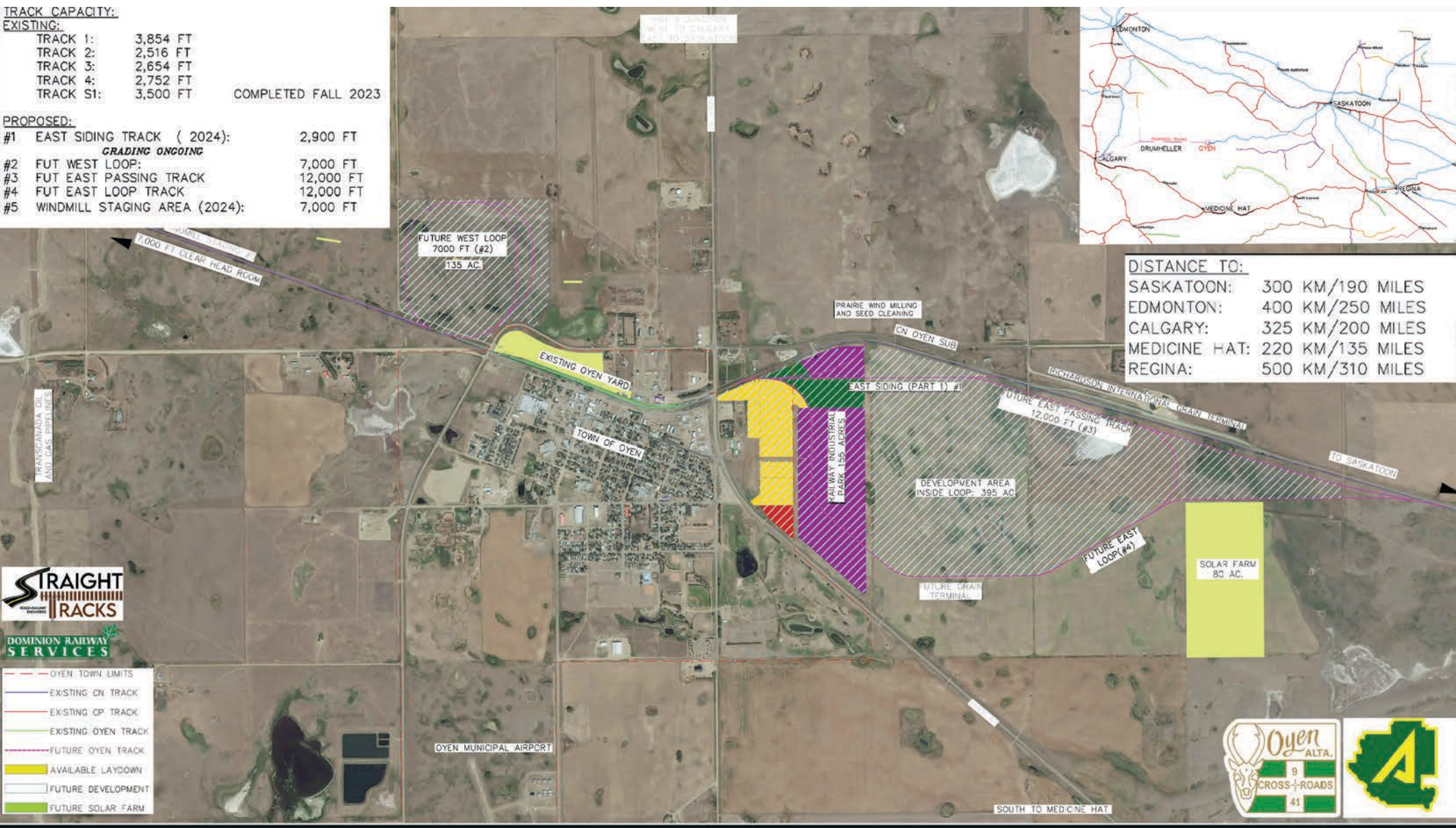
**PROPOSED:**

#1 EAST SIDING TRACK ( 2024):	2,900 FT
<i>GRADING ONGOING</i>	
#2 FUT WEST LOOP:	7,000 FT
#3 FUT EAST PASSING TRACK	12,000 FT
#4 FUT EAST LOOP TRACK	12,000 FT
#5 WINDMILL STAGING AREA (2024):	7,000 FT



**DISTANCE TO:**

SASKATOON:	300 KM/190 MILES
EDMONTON:	400 KM/250 MILES
CALGARY:	325 KM/200 MILES
MEDICINE HAT:	220 KM/135 MILES
REGINA:	500 KM/310 MILES



# OYEN Regional Rail Company

## Future Expansion 2023 - 2028





**Legend**

- Oyen East ASP Boundary
- Town Boundary
- Highway Commercial
- Industrial
- Flex (Hwy-C/Ind)
- Environmental Reserve
- Future Rail ROW
- Future Road
- Marsh
- Open Water
- Swamp
- Future Rail Spur Lines
- Lot Access

## Development Concept

Oyen East Industrial Area Structure Plan



Doug Jones  
 General Manager  
 oyenrail@gmail.com  
 (403)664-0560



Greg Karpo  
 Rail Consultant  
 greg.karpo@gmail.com  
 (587)341-5696